

A stylized illustration of a cityscape in shades of blue, featuring various buildings, trees, and transportation modes like bicycles and cars.

# The California Transportation Assessment

## An Analysis of Transportation Planning and Funding Pursuant to AB 285

SGC Meeting  
November 16, 2021



CALIFORNIA  
STRATEGIC  
GROWTH  
COUNCIL

A stylized illustration of a rural landscape in shades of blue, featuring houses, trees, a tractor, and silos.

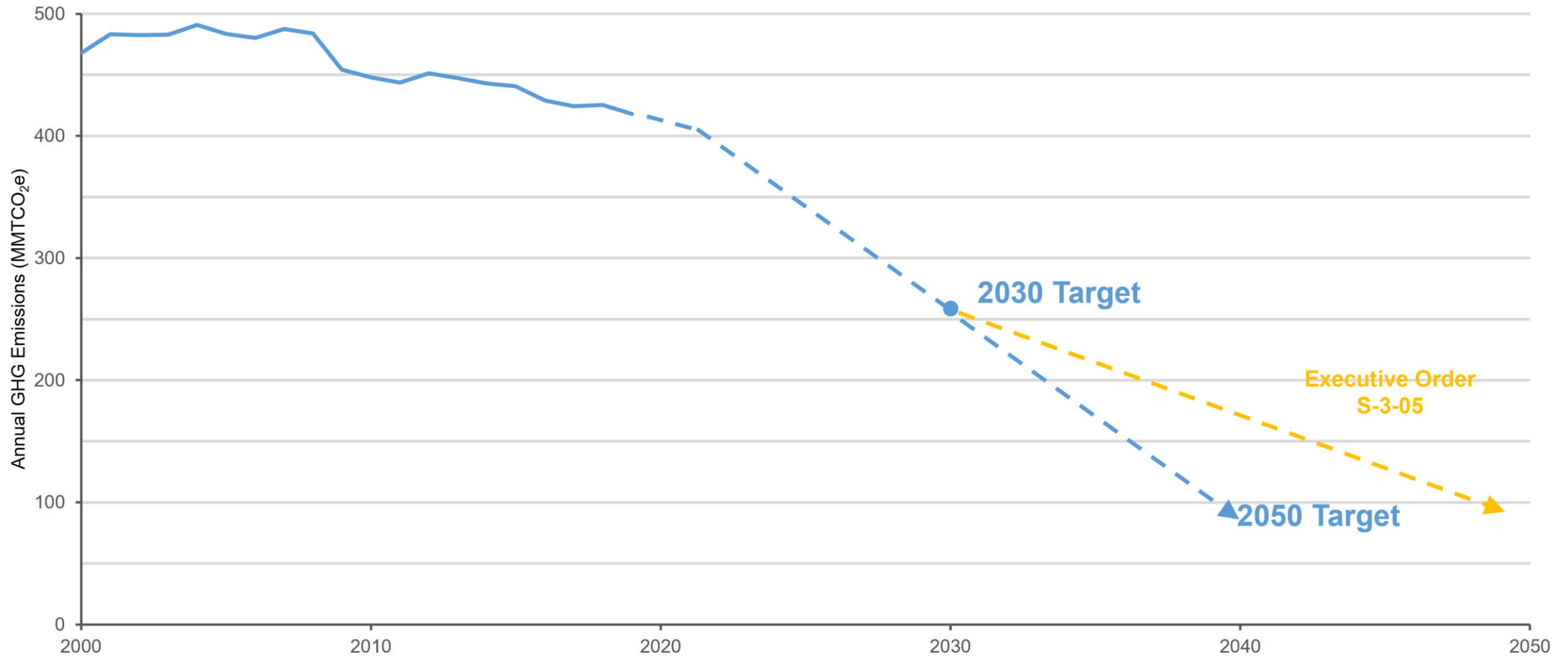
# Background: AB 285 (Friedman, Chapter 605, Statutes of 2019)

A report to the Legislature containing:

- Overview of the California Transportation Plan (CTP)
- Overview of all Sustainable Communities Strategies (SCSs)
- Assessment of how implementation of the CTP and SCSs will influence the configuration of the **statewide integrated multimodal transportation system**.
- A review of the potential **impacts and opportunities for coordination** of several State funding programs\*
- Recommendations for the improvement of these programs or **other relevant transportation funding programs** to better align the programs to meet **long-term common goals**, including the goals outlined in the California Transportation Plan.

\*Programs named: The Affordable Housing and Sustainable Communities Program, the Transit and Intercity Rail Capital Program, the Low Carbon Transit Operations Program, the Transformative Climate Communities Program, and the Sustainable Transportation Planning Grant Program

# Background: CA has ambitious greenhouse gas reduction goals

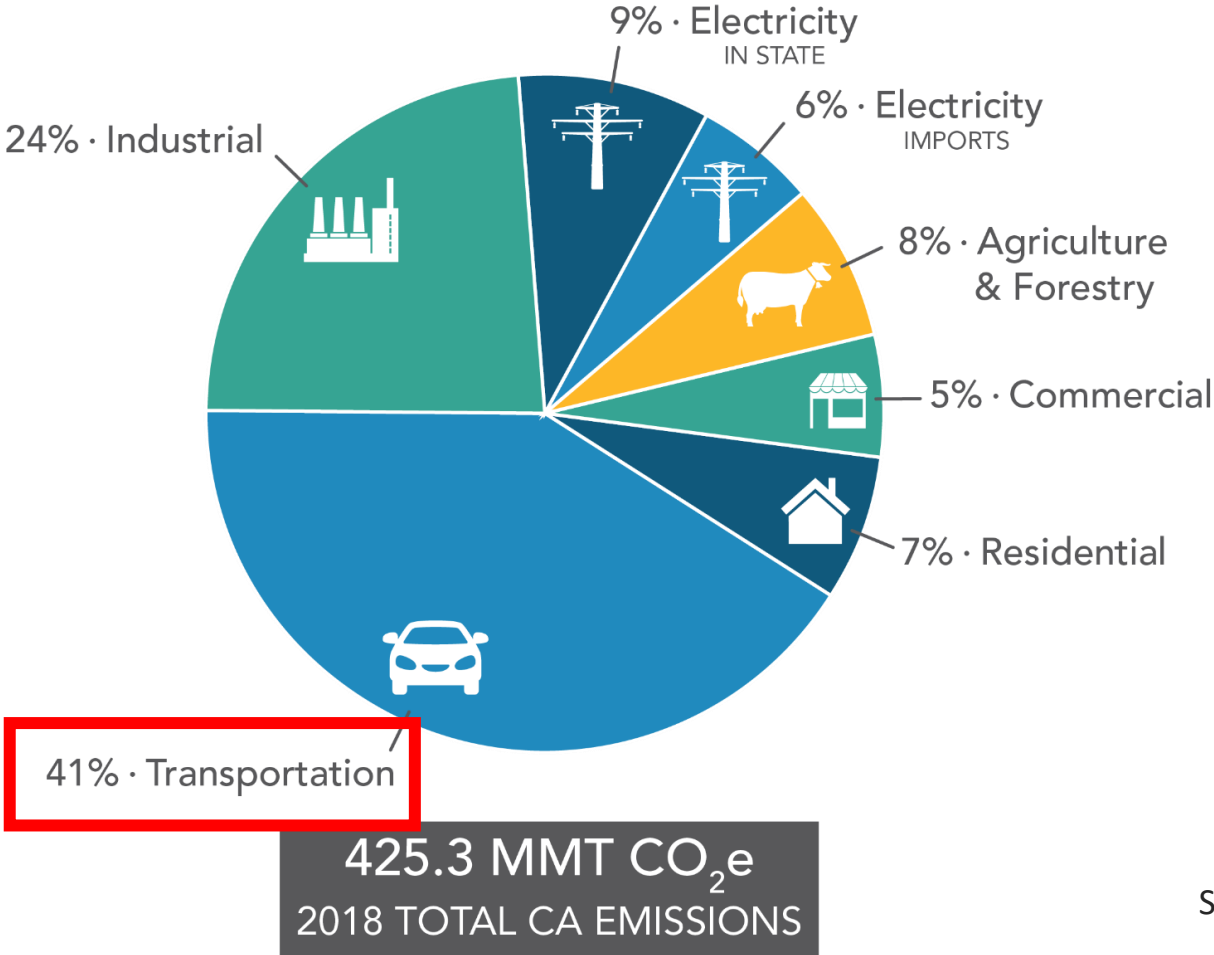


Source: CARB, 2021



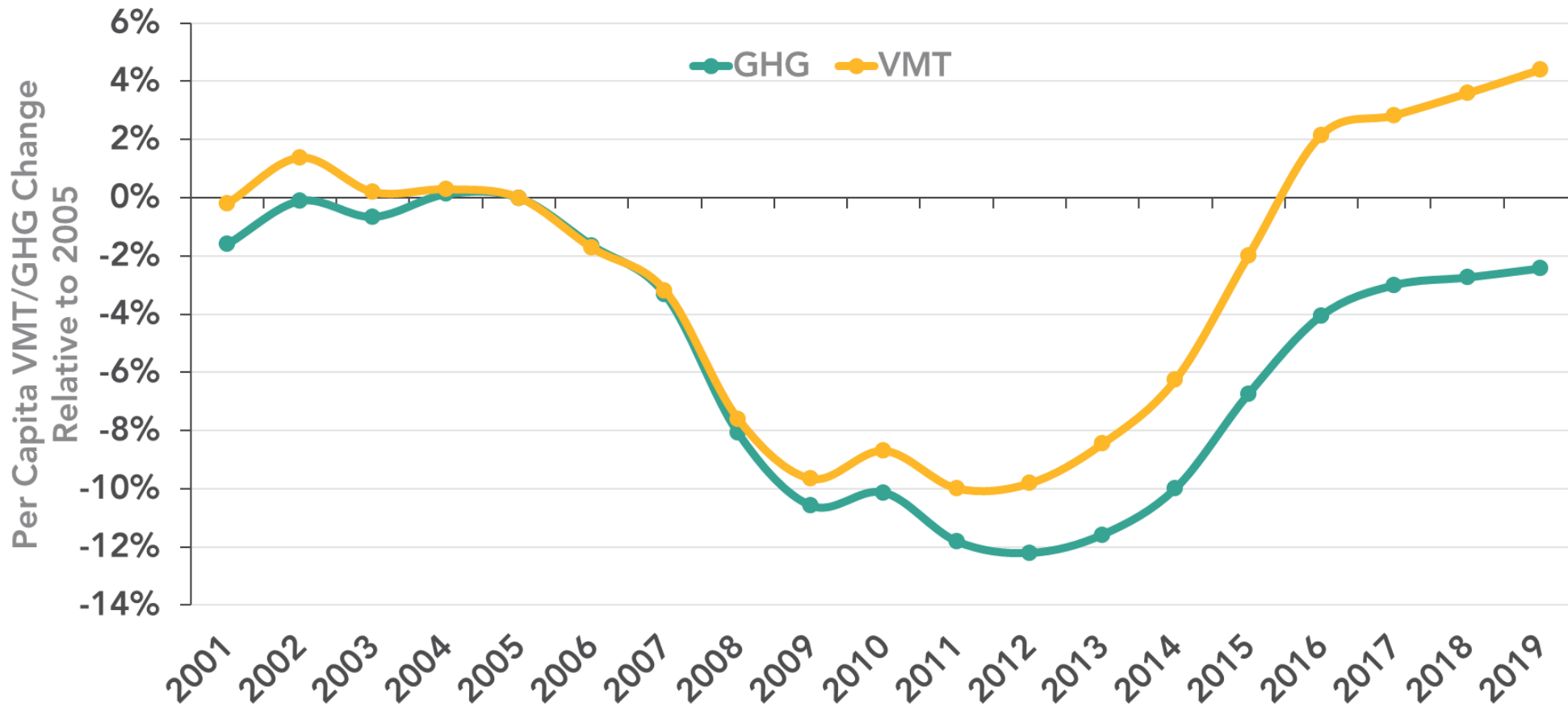
CALIFORNIA  
STRATEGIC  
GROWTH  
COUNCIL

# Background: Transportation is the largest source of greenhouse gas emissions in California



Source: CARB, [2022 Scoping Plan Update, Kick-Off Workshop](#), June 2021

# Background: California is not on track to meet its greenhouse gas reduction goals



Source: CARB

# Key steps to develop the Assessment

- Hired UC team (April)
- Coordination and consultation with stakeholders and interagency partners (May to September)
- Conduct research (May to September)
- Share draft findings and produce summary report (November and December)
- Submit report to Legislature (Early 2022)

Berkeley Institute of Transportation Studies

UCLA Institute of Transportation Studies

ITS UC DAVIS  
INSTITUTE OF TRANSPORTATION STUDIES

# SGC Next Steps

- November and December: Revise research papers and produce draft report
- Early 2022: Submit report to the Legislature
- 2022: Work with stakeholders and interagency partners to develop recommendations and next steps informed by these initial findings



Photo courtesy of Sergio Ruiz

A blue-toned illustration of a cityscape with various buildings, trees, and people riding bicycles, located at the top of the page.

**Please submit questions/comments  
to [transportation@sgc.ca.gov](mailto:transportation@sgc.ca.gov).**

**Comments received by December 1 will inform SGC's report  
to the State Legislature.**



**CALIFORNIA  
STRATEGIC  
GROWTH  
COUNCIL**

A blue-toned illustration of a rural landscape with houses, trees, a tractor, and silos, located at the bottom of the page.



# Questions

1. What are your reactions to and takeaways from the material presented here?
2. What long-term common goals should be prioritized in transportation decision-making, and how can we best advance those priorities?
3. What questions and needs does this report raise? After submitting the report to the Legislature, what do you see as key next steps?